

Truck Mount Spreaders



Model HP 4534-16
Hydraulic Drive System

Litter - Lime - Shavings

Available in Hydraulic or Mechanical Drive Systems

Hoppers Available in 12' to 26' Lengths

Heavy-Duty / Self-Cleaning Bar Chain

Twin 24" Disc Spinners

Exclusive Pattern Divider Mechanism

MidTech® Guidance & Rate Control Systems Available

BBI 
BARRON & BROTHERS INTERNATIONAL

"Spreaders that work as hard as you do"

Truck Mount

Litter - Lime - Shavings Spreaders

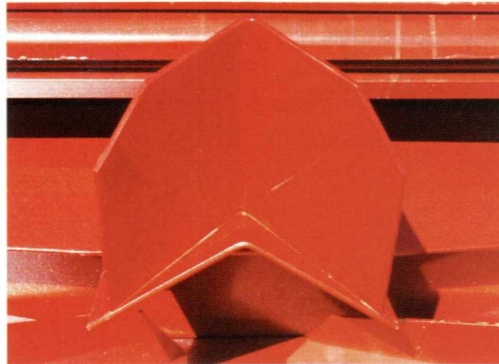
Advanced spreader technology delivering
maximum coverage at a reasonable cost.

The proven standard... for truck mount spreaders, BBI spreaders are the most productive, accurate and reliable spreaders available today. For more than a decade, BBI precision spreaders have been engineered using heavy-duty quality materials and are manufactured to standards above and beyond any other spreader manufacturer.

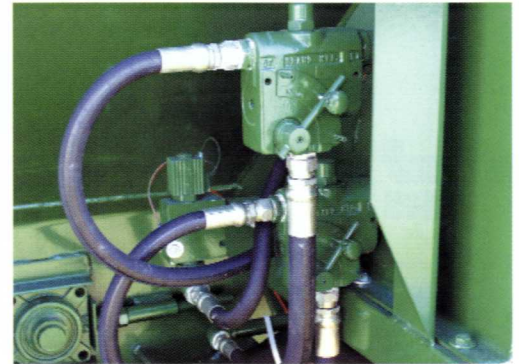
BBI spreaders are built using only heavy duty, high-strength materials for long lasting durability. Hopper beds are constructed from 10 gauge sheet steel. Choose between our optional advanced hydraulic system that's engineered for less maintenance and the ability to vary spinner and bed chain speeds, or our time-tested, reliable mechanical drive. Our "Accu-flow" pattern divider, an exclusive design feature on BBI litter spreaders, assures uniform material delivery to the spinners, for improved material distribution. Call your BBI representative for information about other features, options and specifications. MidTech® guidance and rate control systems also available.



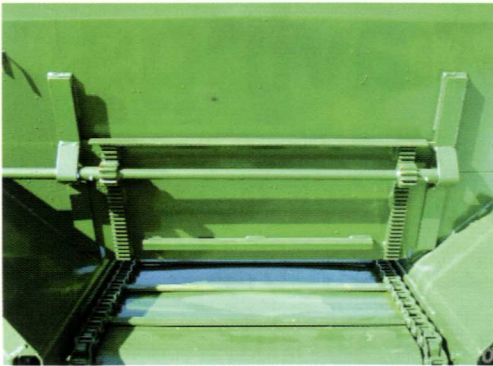
**Heavy-Duty Hopper Construction
With Heavy-Duty Chains**



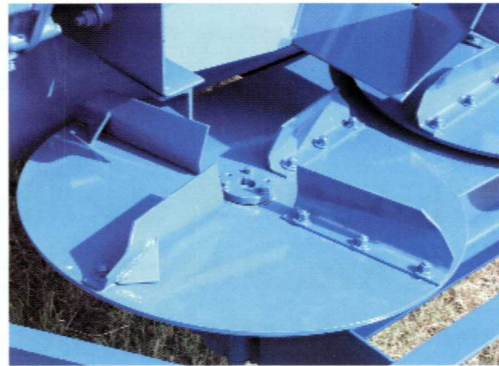
**"Accu-Flow" Pattern Divider
For Accurate Material Flow**



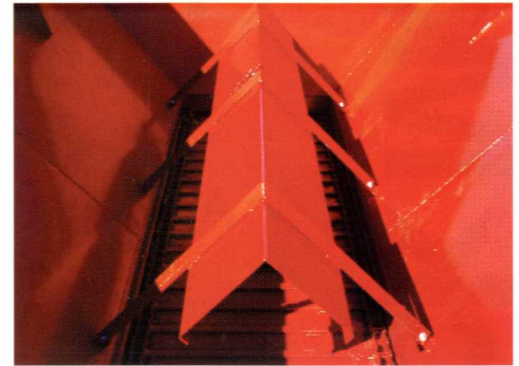
**Individual Hydraulic Speed Controls
For Spinner and Conveyor**



**Rack & Pinion Gate
For Jam-Free Operation**



**24" Disk Spinner Design For
Precision Coverage**



**"Inverted V" Option for Heavy
Materials Such As Lime**



You may choose from a variety of standard colors or optional stainless steel hopper construction.

Your Authorized BBI Dealer

BBI
BARRON & BROTHERS INTERNATIONAL

2305 White Sulphur Road
P.O. Box 907053
Gainesville, GA 30501
1.800.282-3570